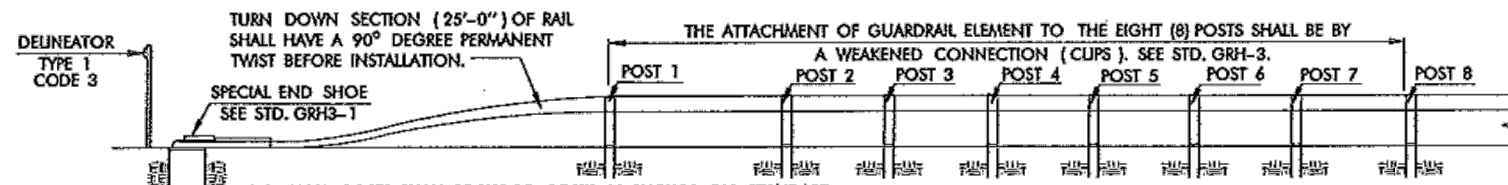


DETAIL OF GUARDRAIL POST IN SHOULDER BASE WIDENING

- ★ SEE 2009 STD. SPECIFICATIONS-SEC. 411, ASPH SURFACE COURSE (HOT MIX-COLD LAID)
- ★★ MEASURE DIRECTLY BELOW RAIL, GUARDRAIL TO BE INSTALLED THIS DIMENSION. WHEN INSTALLING GUARDRAIL IN AN AREA WITH NO SHOULDER WIDENING THE RAIL HEIGHT SHALL BE MEASURED AS FOLLOWS:
 FOR NEGATIVE GRADE SHOULDERS, MEASURE TO A LINE FROM THE SHOULDER ON THE SAME SLOPE AS THE SHOULDER.
 FOR POSITIVE GRADE & LEVEL SHLDRS, MEASURE FROM A LINE LEVEL WITH THE EDGE OF SHOULDER.

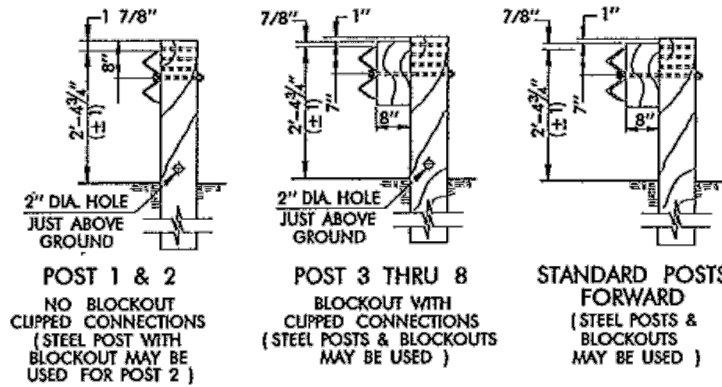


TURN DOWN SECTION (25'-0") OF RAIL SHALL HAVE A 90° DEGREE PERMANENT TWIST BEFORE INSTALLATION.

THESE EIGHT POSTS SHALL BE WOOD POSTS AS SHOWN ON STANDARD DRAWING GRH3-1. WEAKEN POSTS BY DRILLING ONE 2" DIAMETER HOLE THROUGH THE POST & ABOVE THE GROUND LINE PARALLEL WITH THE EDGE OF PAVEMENT. DRILLED HOLES SHOULD BE ANGLED SLIGHTLY VERTICAL TO PREVENT WATER FROM STANDING. HOLES SHALL BE TREATED WITH AN APPROVED PRESERVATIVE. BLOCKOUT SHALL NOT BE USED AT POST 1 & 2.

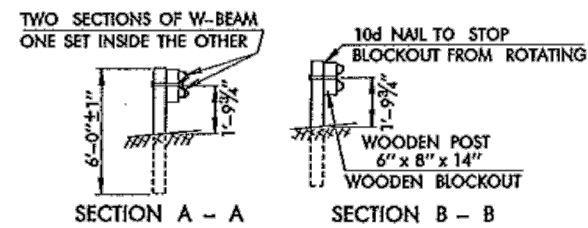
POST 1 SHALL BE A WOOD POST WITH NO BLOCKOUT AND WITH A 2" DIAMETER HOLE DRILLED THROUGH THE POST PARALLEL TO EDGE OF PAVEMENT JUST ABOVE GROUND LINE. POST 2 THRU 8 SHALL BE STEEL POSTS WITH BLOCKOUTS. SEE STANDARD DRAWING GRH3-1 FOR POST DETAILS.

WOOD POSTS OPTION ANCHOR UNIT - TYPE A STEEL POSTS OPTION

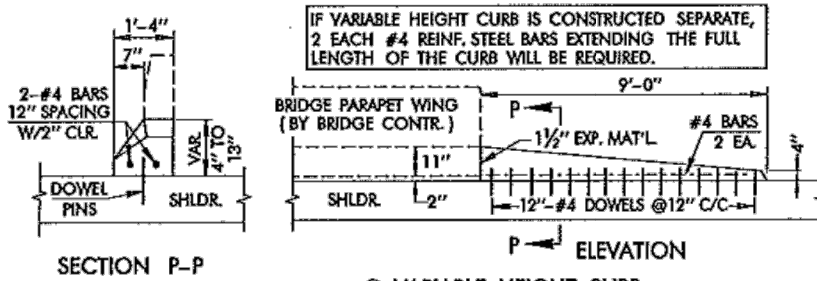


WOOD POST DETAIL RECTANGULAR POSTS SHOWN SEE MAINTENANCE STD. DRAWING GRH3-1

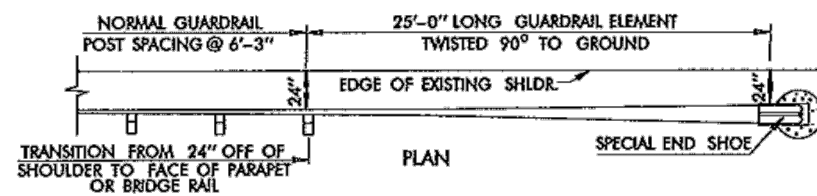
ANCHOR UNIT - TYPE A - APPROACH END



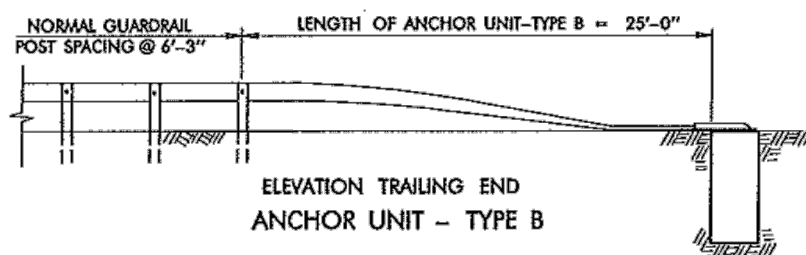
SECTION A - A SECTION B - B



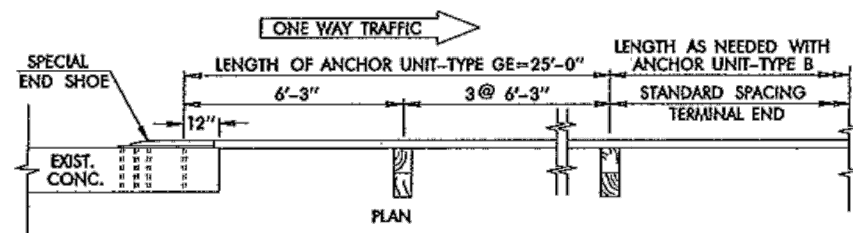
SECTION P-P VARIABLE HEIGHT CURB



PLAN ONE WAY TRAFFIC



ELEVATION TRAILING END ANCHOR UNIT - TYPE B



ANCHOR UNIT - TYPE GE ONLY TO BE USED AT EXITING ENDS OF ONE WAY BRIDGES

GENERAL NOTES

- ALL CONSTRUCTION AND MATERIAL REQUIREMENTS SHALL BE IN ACCORDANCE WITH THE 2009 ENGLISH STANDARD SPECIFICATIONS.
- THE BRIDGE CONTRACTOR SHALL PROVIDE HOLES FOR THE CONNECTION OF W-BEAM TERMINAL CONNECTOR (SPECIAL END SHOE) TO BRIDGE RAIL AND SLOPED FACE PARAPET. RETROFIT CONNECTIONS FOR GUARDRAIL (SPECIAL END SHOE) SHALL BE FIELD DRILLED BY THE SURFACING CONTRACTOR.
- GUARDRAIL COMPONENTS SHALL MEET NCHRP-350, THE APPLICABLE STANDARDS OF "A GUIDE TO STANDARDIZED HIGHWAY BARRIER RAIL HARDWARE" PREPARED AND APPROVED BY THE AASHTO-ARTBA-AGC JOINT COMMITTEE, TECHNICAL BULLETIN NO. 268 B.
- POST SPACING AND FACE OF RAIL ALIGNMENT REMAINS THE SAME.

BASIS OF PAYMENT		
ITEM NO.	ITEM	UNIT
623.06(F)	GUARDRAIL ANCHOR UNIT (TYPE ▲)	EA.

▲ TYPE OF GUARDRAIL ANCHOR UNIT TO BE SPECIFIED.

TRIBUTARY TO WHISKEY CREEK COTTON COUNTY

GUARDRAIL AND UNITS